



The Council on Industrial and Systems Engineering

The Council on Industrial and Systems Engineering (CISE) is a group of up to 30 executive leaders from non-competing industries who have accountability for ISE (or similar) departments. We are advocates of the ISE profession and are focused on sharing best practices and learning from each other to benefit our companies.

- Andeavor
- Cannon Design
- CVG
- Emory Healthcare
- Enervision
- General Motors
- GFR Media
- IISE
- Ingram Micro
- Intel
- Sandia National Labs
- The Lamus Group
- The Ohio State University
- The Poirier Group
- TransSolutions LLC
- Triumph Aerostructures
- UPS
- Walmart Canada
- Walt Disney Parks and Resorts
- Wolseley Canada

Membership Benefits

Membership in CISE provides:

- Global exposure and recognition for you and your organization.
- Professional development with fellow executive leaders.
- Access to other companies' locations, insights on their operations, learnings from their experiences and interactions with other ISE and related functional teams.
- An opportunity to demonstrate the importance and value of industrial and systems engineering to those unfamiliar with ISE.
- Exclusive networking at IISE conferences with a broad group of practicing professionals.
- The chance to give back to your profession and to the Institute of Industrial and Systems Engineers.

Membership Qualifications

Members of CISE:

- Are the ranking executives of industrial and systems engineering and/or operational excellence (or other related functions) in their organizations.
- Have extensive management and leadership experience.
- Have the ability to influence the image and practice of the ISE profession.
- Are IISE members.
- Should be able and willing to attend two in-person meetings per year.

Membership Expectations

Members are expected to:

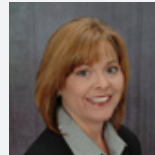
- Attend meetings twice per year (once during the IISE Annual Conference & Expo and one other meeting hosted by a member in the fall).
- To contribute actively and openly during meetings due to the limited membership size and the non-competing nature of our members.
- Afford the cost of membership—the expense of meetings will be prorated to all members regardless of attendance. In addition to meeting costs, members are invoiced \$300 per year (\$150 per meeting) for CISE Scholarship Dues.



Tandy Bailey
Director of Corporate Strategy,
UPS



Yves Bélanger
VP Supply Chain,
Wolseley Canada



Gloria Bender
Managing Principal,
TransSolutions LLC



David Berger
President,
The Lamus Group



Jim Dobson
Sr. Mgr. Industrial Engineering,
Walt Disney Parks and Resorts



Jack Feng
VP Operational Excellence,
CVG



Don Greene
CEO,
IISE



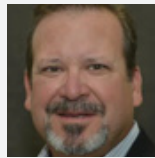
Elaine Johns
President/CEO,
Enervision



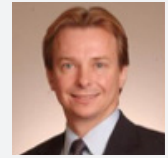
Victoria Jordan
VP Quality,
Emory Healthcare



Carl Kirpes
Enterprise Business Improvement
Program & Systems Manager,
Andeavor



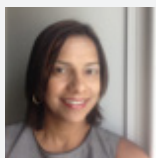
Larry Marsh
Director Continuous
Improvement,
Triumph Aerostructures



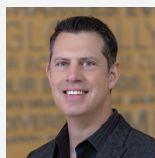
David Poirier
President,
The Poirier Group



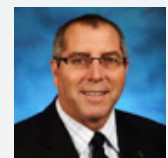
Ron Romano
Sr. Director,
Bus. Proc. Reengineering,
Walmart Canada



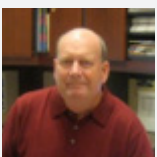
Mariette Sanchez
Sr. Plant Director,
GFR Media



Rudy Santacroce
Sr. VP, Advisory Services,
Cannon Design



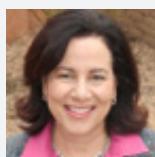
Steve Savoie
Sr. Mgr.,
Industrial Engineering,
General Motors



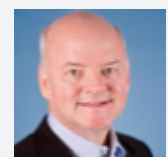
Scott Sink
Facilitator CISE,
The Ohio State University



Eric Stebbins
Bus. Ops. Mgr.,
Intel



Joan Tafoya
Sr. Manager,
Sandia National Labs



Rick Wilkinson
VP, Global Engineering
Ingram Micro